



Kestrel House, Marlborough Road, Gillingham, Kent, ME7 5HH

Asking Price £125,000

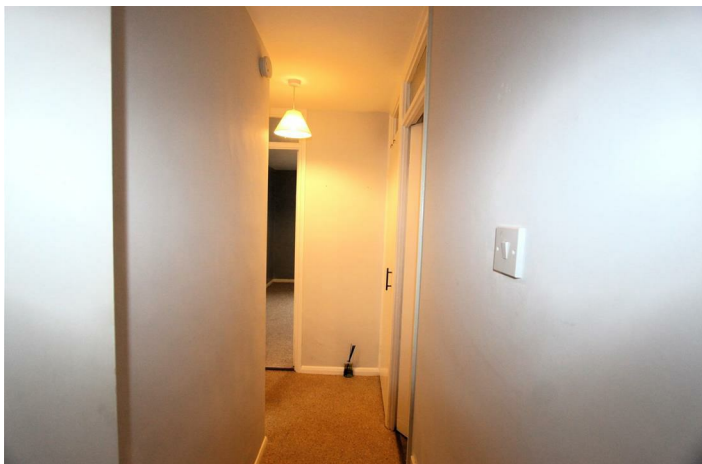
- One Bedroom Flat
- Close to High Street
- Allocated Parking
- Available Now

6 Kestral House, Gillingham ME7 5HH

We are delighted to offer for sale this one bedroom, third floor flat on Marlborough Road, which is conveniently located in Central Gillingham close to the busy High Street where you will find a wide range of shopping facilities and for the commuter, fast rail services into London Victoria and high speed links into London St Pancras. The property offers fantastic views overlooking the historic Great Lines open public space and War Memorial, also sports fields and Medway Park Swimming Pool and Sports Centre. Once inside this charming open plan flat you will find a kitchen/living room, double bedroom and modern bathroom suite. Outside there are communal gardens and drying areas and an allocated car parking space. The property is available now. Call the friendly Sales Team at Wright & Co today, for your earliest appointment to view!



Council Tax Band: A



LOUNGE/KITCHEN

24'3" x 11'1"

BEDROOM

12'1" x 11'1"

BATHROOM

6'6" x 4'11"



Directions

Viewings

Viewings by arrangement only. Call 01634 578484 to make an appointment.

EPC Rating:
E

Energy Efficiency Rating		
	Current	Potential
Very energy efficient - lower running costs		
(92 plus) A		
(81-91) B		81
(69-80) C		
(55-68) D		
(39-54) E	40	
(21-38) F		
(1-20) G		
Not energy efficient - higher running costs		
England & Wales	EU Directive 2002/91/EC	